

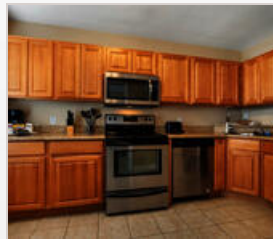
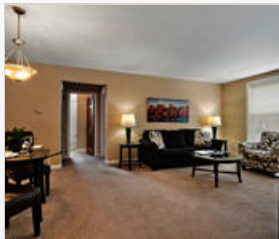


8110 ROXBURGH

8110 Roxburgh Dr.
Clayton, MO 63105 | 1-888-249-5719



Roxburgh provides a prestigious urban address and the ambiance of a hideaway nestled among the trees. Roxburgh is surrounded by three prestigious neighborhoods: Clayton, Ladue, and Richmond Heights, and is minutes away from upscale dining, entertainment, and shopping. Walk to peaceful Shaw Park, The Galleria and Downtown Clayton. All suites include garage parking.



COMMUNITY/APARTMENT AMENITIES

- Air Conditioning
- Dishwasher
- Garage Parking
- High-speed Internet access
- Washer/Dryer in-suite

LEARN MORE ON OUR WEBSITE

<https://www.vipcorporatehousing.com/properties/8110-roxburgh.html>

www.vipcorporatehousing.com